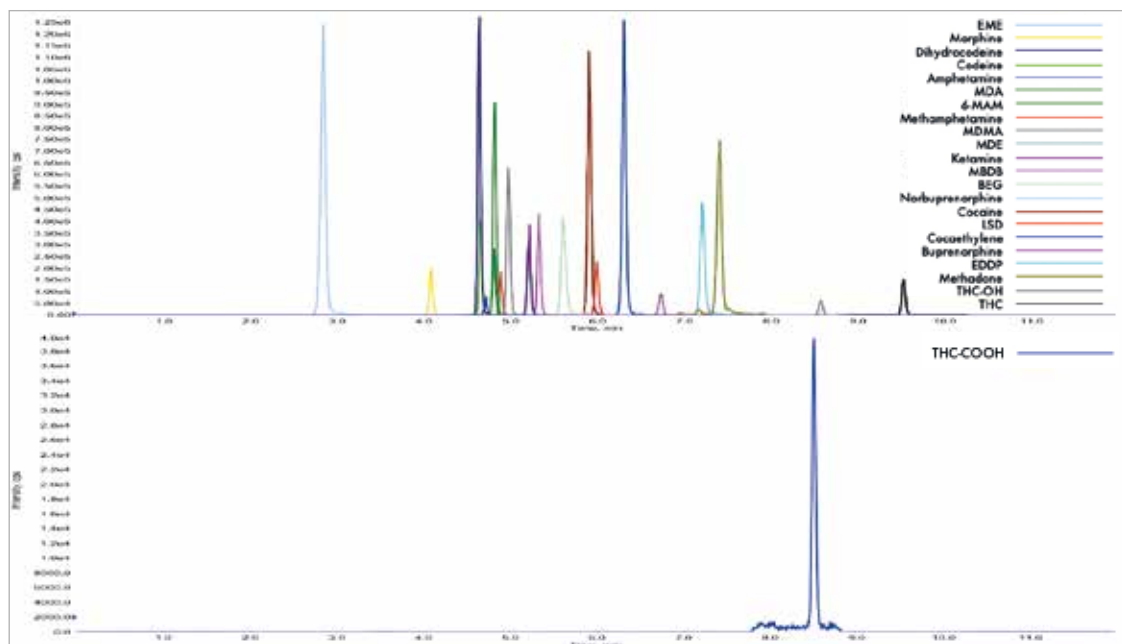


SHORT METHOD DESCRIPTION

FloMass[®] Drugs of Abuse in Whole Blood

Amphetamine, Methamphetamine, MDA, MDE, MDMA, MBDB, BEG, Cocaine, EME, Cocaethylene, Morphine, Codeine, Dihydrocodeine, 6-MAM, THC, 11-OH-THC, THC-COOH, Methadone, EDDP, Buprenorphine, Norbuprenorphine, Ketamina, LSD.



Performance

Analyte	Linearity (ng/mL)	LLOD (ng/mL)	LLOQ (ng/mL)	Analyte	Linearity (ng/mL)	LLOD (ng/mL)	LLOQ (ng/mL)
Amphetamine	0.248 - 202	0.074	0.248	Dihydrocodeine	0.137 - 333	0.041	0.137
Methamphetamine	0.358 - 340	0.107	0.358	6-MAM	0.293 - 404	0.088	0.293
MDA	0.222 - 385	0.067	0.222	THC	0.117 - 65.6	0.035	0.117
MDE	0.374 - 380	0.112	0.374	THC-OH	0.173 - 60.8	0.052	0.173
MDMA	0.202 - 273	0.061	0.202	THC-COOH	0.101 - 57.2	0.030	0.101
MBDB	0.365 - 404	0.110	0.365	Methadone	0.462 - 375	0.138	0.462
Cocaine	0.298 - 367	0.089	0.298	EDDP	0.184 - 350	0.055	0.184
BEG	0.435 - 390	0.131	0.435	Buprenorphine	0.067 - 69.6	0.020	0.067
EME	0.233 - 404	0.070	0.233	Norbuprenorphine	0.096 - 74.0	0.029	0.096
Cocaethylene	0.228 - 400	0.069	0.228	Ketamine	0.418 - 484	0.125	0.418
Morphine	0.241 - 488	0.072	0.241	LSD	0.008 - 9.08	0.002	0.008
Codeine	0.209 - 365	0.063	0.209				

ORDERING GUIDE

Order No.	Description	Quantity
EUM08100	FloMass® Drug of Abuse in Whole Blood (Amphetamine, Methamphetamine, MDA, MDE, MDMA, MBDB, BEG, Cocaine, EME, Cocaethylene, Morphine, Codeine, Dihydrocodeine, 6-MAM, THC, 11-OH-THC, THC-COOH, Methadone, EDDP, Buprenorphine, Norbuprenorphine, Ketamina, LSD) LC-MS/MS detection	100 assays
	Contents	
	Mobile Phase A	1 x EUM02011
	Mobile Phase B	1 x EUM02012
	Mobile Phase C	1 x EUM02013
	Buffer Solution	1 x EUM08021
	Precipitant Solution	1 x EUM08022
	Diluting Solution	1 x EUM08023
	Internal Standard Mix	1 x EUM08031
	Separately available components	
EUM02011	Mobile Phase A	600 ml
EUM02012	Mobile Phase B	500 ml
EUM02013	Mobile Phase C	500 ml
EUM08021	Buffer Solution	12 ml
EUM08022	Precipitant Solution	65 ml
EUM08023	Diluting Solution	12 ml
EUM08031	Internal Standard Mix	2x1 ml
	Accessory	
EUM00C02	Analytical Column with test chromatogram	1 pc
EUM00A04	Precolumns	4 pcs
EUM00A05	Holder (incl. 1 precolumn)	1 pc
EUM02071	FloTuning Mix A + Mix B	2x2 ml
EUM08055	Control Set for Drug of Abuse in Whole Blood, lyoph. (2 levels)	3x2x0.6 ml
EUM08042	Calibrator Set for Drug of Abuse in Urine, lyoph. (6 levels)	3x6x0.6 ml

HPLC-MS/MS system conditions

Ionization: ESI positive mode, except for THC-COOH analyzed in negative mode

MS/MS: specific MRM

Injection volume: 15 µl (variable according to instrumental sensitivity)

Running time: 12 min

Column heater: 40°C